

ATTAINING NEW HEIGHTS IN TECHNOLOGY & ACCURACY

The HORIZON Zenith Laser Plummet HZLP401 is used for vertical plumbing through extended heights. This is particularly useful for the Builder or Surveyor when working with heights that are inaccessible or too large to plumb with normal Optical Plummetts.

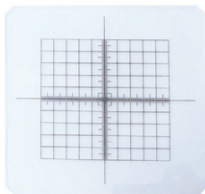
The instrument is also used for construction of vertical shafts and similar structures like massive vertical Cable Ducts or Elevator paths.

Featuring a detachable main unit, the Tribrach of the Plummet system can be centred over or under the required point and then replaced by a Theodolite or Total Station for guaranteed accuracies.

Standard Accessories



Polarised Eye Filter
for protection against glare



Targeting Plate
for measurement



Tool Kit for light maintenance



Hard Carry Case
Durable for robust use

Application examples:

- Tower work
- High-rise work
- Elevator Shaft Construction
- Vertical Piping Construction
- Vertical Cable Ducts
- Transfer of Vertical Survey points to ground
- Ceiling work

Features:

- Highly visible laser for ease of sighting
- Useful when working with large vertical distances
- Separatable main unit and Tribrach system
- Can be used independently or with Total Stations/Theodolites

Optional Laser Accessories Available



Zenith Laser Plummet HZLP401
HZLP401

HORIZON Zenith Plummet HZLP401 Specifications	
Accuracy	1/40,000
TELESCOPE	
Effective Aperture	30mm
Magnification	25x
Minimum Focus Distance	1m
Field of View	1° 30'
Minimum Focusing Distance	1m
Image	Inverted
LASER DIODE	
Wavelength	635nm
Laser Class	Class 2
LASER PLUMMET	
Auto Shut Off Time Interval	5min
Minimum Viewing Distance	0.5m
Plummet Accuracy	1mm
LASER OPERATION RANGE	
Day	120m
Night	300m
LASER SPOT	
40m Range	Maximum 4mm
100m Range	Maximum 6mm
Deviation, Optical and Laser Axis	5"
Mean Square Plumblines error	≤5"
OTHERS	
Operation Temperature	-10°C ~ +40°C
Instrument Weight	2.9kg
Instrument Dimensions	130x110x244(mm)
Power Supply	3V

ONE OF THE BEST PRISMS IN THE WORLD

Featuring Prisms tested by an In-house **ZYGO Interferometer**

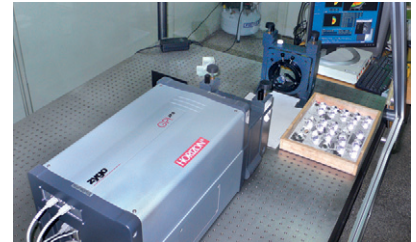
HORIZON Prisms Systems are **one of the best in the World**. HORIZON can professionally verify their prism accuracy on an in-house ZYGO Interferometer upon demand.

While most other Prism manufacturers claim certain accuracies, HORIZON can actually certify such claims. Strict quality control assures that only the best HORIZON Prism Systems leave our warehouse.

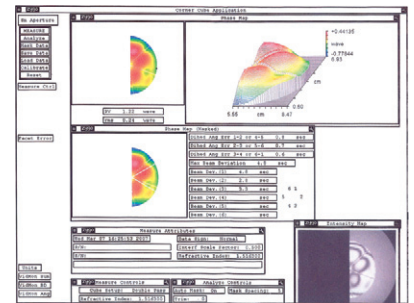
Our Prism Systems are **compatible with all the major brands** of instruments like Leica, Topcon, Sokkia, Nikon, Pentax and Trimble.

Features of the HORIZON Prism Systems:

- HORIZON Prisms are checked and certified by In-house Interferometer
- Prism accuracy is below 5 arc seconds. Certification of the Prism Accuracy is possible upon demand
- Available in Silver, Copper coating, or plain with no coating
- Available in 64mm and 65mm, and 25.4mm/38mm for mini Prisms
- Canister for 64/65mm available in orange, yellow and black
- Canisters are drop resistant
- Alternative sizes may be available upon request
- Prism offsets are 0, 30mm generally, and -34.4mm for Leica instruments
- Prism customisation possible upon request



The ZYGO Interferometer
Batch testing of Horizon Prisms



Prism accuracy print-out
The results from verifying a Prism's accuracy & clarity using the ZYGO Interferometer



ADS 10
ADS 0010 (Set)



ADS 11
ADS 0011



ADS 12
ADS 0012



ADS 13
ADS 0013



ADS 16
ADS 0016



Optional ADS Soft Carrying Case

ADS SPAB01 (Item interchangeable for the standard ADS Carrying Case or purchased separately)



ADS 17
ADS 0017



ADS 18
ADS 0018



ADS 21
ADS 0021



ADS 22
ADS 0022



ADS 23
ADS 0023



ADS 27
ADS 0027



ADS 30
ADS 0030



ADS 35
ADS 0035



Standard ADS Carrying Case
ADS AX02 (Come with all reflector Systems)



MINI PRISM SYSTEMS - PORTABLE & EASY

When you need something that is small, portable light and gets the job done, look no further than these Mini ADS Prism Sets

Being small does not make these systems fragile. These sets of silver/copper coated Mini Prism Systems are mounted in air tight housings to protect against shock, dirt and moisture.

- Drop/Shock Resistant
- Prisms are housed in a Water Proof Housing

Used for Monitoring (Only the ADS 114)

- Structures
 - Bridges
 - Tunnels
 - Buildings
- Plus others



NEW & IMPROVED
100% Secure Mounting
of Prism within Housing



ADS 114
ADS 0114-N



ADS 102
ADS 0102



ADS 104
ADS 0104



ADS 105A
ADS 0105 (38mm)



ADS 105B
ADS 0105 (25mm)



ADS 112
ADS 0112(0/30)
ADS 0112(17.5)



ADS 103 (Shown with optional Tripod)
ADS 0103



ADS Mini Prism Specifications	ADS 102	ADS 103	ADS 104	ADS 105A	ADS 105B	ADS 112	ADS 114
Prism Size	25.4mm	25.4mm	25.4mm	38mm	25.4mm	25.4mm	25.4mm
Coating	Silver	Silver	Silver	Silver	Silver	Copper	Copper
Prism Constant	0/30mm	0	0/30mm	0/30mm	0/30mm	0/30mm/17.5mm	25.4mm
Mini Pole	None	3x60cm/4x25cm	None	3x60cm	3x60cm	4x30cm	None

Note: *Available in yellow and red colour for ADS 104 / Mini Pole (4 x 25cm) is available for ADS 105A & 105B upon request

AK SERIES PRISM SETS - SIMPLIFIED & READY ACCURACY

Accessory Information - All AK Series Prism Sets are supplied with Prism in Canister, Prism holder, Prism Cover, Target Plate and Soft Padded Carrying Case

AK Series Prism Systems	The AK 16T	All models
Prism Size	Ø65mm	Ø64mm
Prism Constant	-34.4mm	0 & 30mm
Prism/Target Height	100mm	100mm

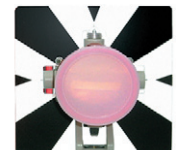
All ADS Prism Pole Graduation are calibrated to suit AK Prism Series target height



AK 10T
ADS 0010



AK 11T
ADS 0100



AK 12T
ADS 0120



AK 16T
ADS 0160



AK 17T
ADS 0170



AK 18T
ADS 0180



AK 21T
ADS 0210



AK 22T
ADS 0220



AK 23T
ADS 0230

ONE OF THE BEST 360° ALL-ROUNDERS

The HORIZON 360° Prism System

The most versatile Prism with a 360° Omni Directional Measurement capacity. It eliminates manual positioning of the Prism which saves time and manpower. This allows the certain surveying jobs to be a one man operation.

This is also why this Prism is essential for Hydro Surveying, where 360° measurability is important.

Besides Point Surveying, this nifty Prism also does 3D Profiling and is highly compatible with Total Stations.



ADS Type L(left) & ADS Type 5/8"(centre) Sighting Pole (right)
ADS 360PR(L) & ADS 360PR(5/8)

HORIZON 360° Type L & Type 5/8 Prism System

- Mounted on pole or Tribrach.
- Measurement from any direction
- Land & Hydro Survey
- Copper Coated Prisms
- Bayonet Leica or 5/8" fitting
- Range : 1200 meters

ADS 360PR Series Specifications	ADS 360 Type L	ADS 360 Type 5/8
Prism Constant	-10mm	-10mm
Average Measuring Range	1200m	1200m
Mounting Adapter	Leica Bayonet Type Adapter	5/8" x 11 Adapter
Prism Accuracy	5"	5"
Dimension	143.5 x 64	157 x 64
Weight	360g	350g

HORIZON 360° ADS 107

A light weight 360° Prism System is created by mounting 8 pieces of Prism of Ø16mm 45° interval.

ADS 360PR Series Specifications	ADS 107	ADS 109
Prism Constant	8mm	4mm
Prism Centre Height	40mm	40mm
Dimensions	Ø60 x H75mm	Ø74 x H96mm
Mounting Adapter	Leica or 5/8"	Leica or 5/8"



ADS 107
ADS 107PR



All ADS 360° Prisms come with Standard Soft Carry Cases

ONE OF THE WORLD'S BEST PRISMS

Unmounted Prisms & Prism Holders

HORIZON Prism one of the world's best because they are verified up to an accuracy of 2 arc seconds.

In this section we would like to highlight the fact that we have an experienced team which can customise any Prism size or coating to suit your exact manufacturing needs and specifications.

Besides the Prism, Horizon provides customised Prism Holders and Holders, made from aluminium and plastics to be light weight, portable and tough.

- High verified accuracy
- Customised sizes and accuracy
- Choice of plain Glass, Silver or Copper coating



Various Types of Prisms in different shapes, sizes and coatings
(Customisation of Prisms available)



25mm Prism in Canister
ADS 0102PR(MC)

CPR1
ADS 65MMPR(MC)

64mm prism in red Canister AY01
ADS 64MMPR(MUC)R1

64mm prism in yellow Canister AY01
ADS 64MMPR(MUC)Y1

Flashing Prism
ADS PRLED(R)

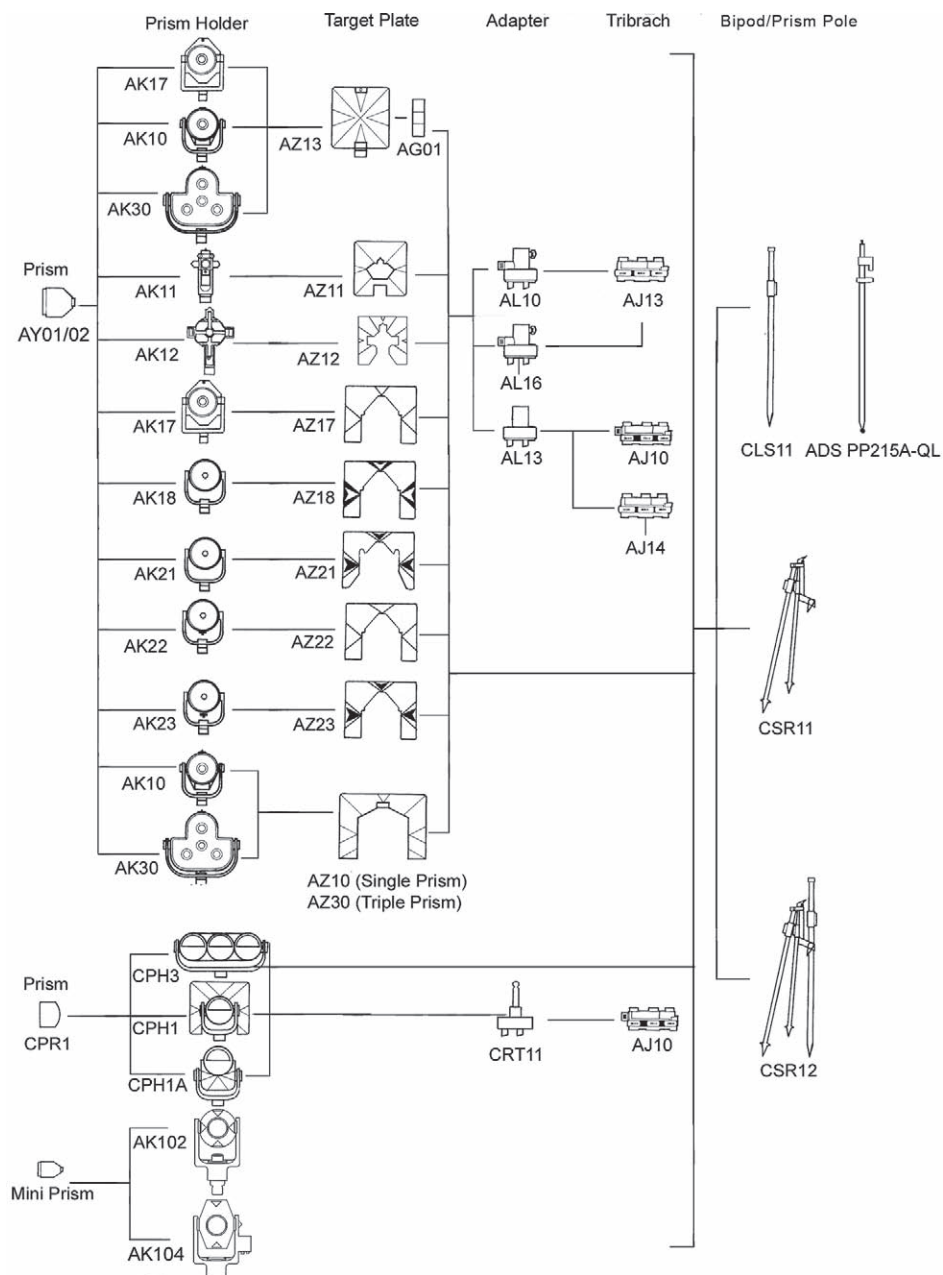
Various Types of Unmounted Prisms in different shapes and sizes

QUALITY PRISM HOLDERS



Various Types of Prisms Holders in different shapes and sizes

THE ADS REFLECTOR FAMILY TREE COMPATIBILITY IS OUR MIDDLE NAME



ADS Reflector Systems Interlinked for full compatibility

HORIZON Reflector Systems are interlinked in a way to provide the full range of products to suit any need, no matter which part is required. A full support system for the Worlds Best Prisms.

Horizon Reflector Systems are thus fully compatible with all major brands of Total Station and Electronic Distance Meters such as Leica, Topcon, Sokkia Nikon, Pentax, Trimble and Zeiss.

TRIBRACH & ADAPTORS

COMPATIBLE WITH ALL MAJOR PRISM SYSTEMS

HORIZON offers a complete range of regular, Laser and Optical Plummet equipped Tribrach and Tribrach Adaptors. These accessories are fully compatible with all types of Prism Systems, and interchangeable with all other Tribachs and Adaptors.

HORIZON presents the new Premium Tribachs, HDF21 and HDF22. These are superiorly constructed quality products, made with the quality-conscious user in mind. Built to impress, these Tribachs will satisfy the most demanding user.



HDF 21
without Optical Plummet
H2FTB HDF21



HDF 22
with Optical Plummet
H2FTB HDF22



AJ 10
with Optical Plummet
ADS TBAJ 10



AJ 13
without Optical Plummet
ADS TBAJ 13



AJ 14
with Laser Plummet
ADS TBAJ 14



AL 10
with Optical Plummet
ADS TAAL 10



AL 13
without Optical Plummet
ADS TAAL 13



AL 16
with Laser Plummet
ADS TAAL 16



AL 14
5/8" Fixed Type
ADS TAAL 14



AL 15
5/8" Rotatable
ADS TAAL 15



CRT 11
without Optical Plummet
ADS SCCRT 11

FULL RANGE & FULL ADAPTABILITY

Various types of Adaptors

HORIZON has a full range of Adaptors to make our Poles and Prisms fully intergratable into whatever existing system you already have.

This takes away any worries you have of compatibility with any major brands.



Leica - PP215
ADS AD001



Standard 5/8" - PP215
ADS AD002



30mm 5/8" - PP215
ADS AD003



53mm 5/8" - PP215
ADS AD004



80mm 5/8" - PP215
ADS AD005



Adjustable Adapter - PP250QL
ADS AD006



Fixed Adapter for Sokkia - P250QL
ADS AD007



Fixed Adapter for Topcon, Pentax & Nikon - PP250QL
ADS AD008



5/8" Leica for Leica PP250QL
ADS AD009



5/8" to 5/8" Extension
ADS AD010



Leica - ADS 360
ADS AD011



5/8" - ADS 360
ADS AD012



Optical Square - PP215
ADS AD013



5/8" to 5/8" Female - Male
ADS AD014



Leica - 5/8"
ADS AD015



Cup Holder Type - PP215
ADS AD016



Clamp - LP02
SP HZLP02-SB



Pole Point
PP250 / PP460 / PP500
SP ADSPTIP

All Tribachs & Adaptors are available in black, green, grey or yellow

PRISM & RANGE ALLOY POLES

MANUFACTURED WITH TOUGHNESS IN MIND

Prism Poles

All HORIZON poles are built to withstand daily rough usage, and we offer a full range of poles to suit all your needs.

Constructed of lightweight aluminium, and reinforced with steel at critical parts, the HORIZON prism poles are air dampened to allow smooth and safe operation. All our Prism Poles are equipped with liquid filled Bubbles, smooth working locking systems, and

laser etched clear graduation readings, with pole tips to make your job easier.

Range poles

Available in 2 and 3m, the HORIZON range pole is constructed with wood, and allows for easy handling with a simple twist and lock mechanism.

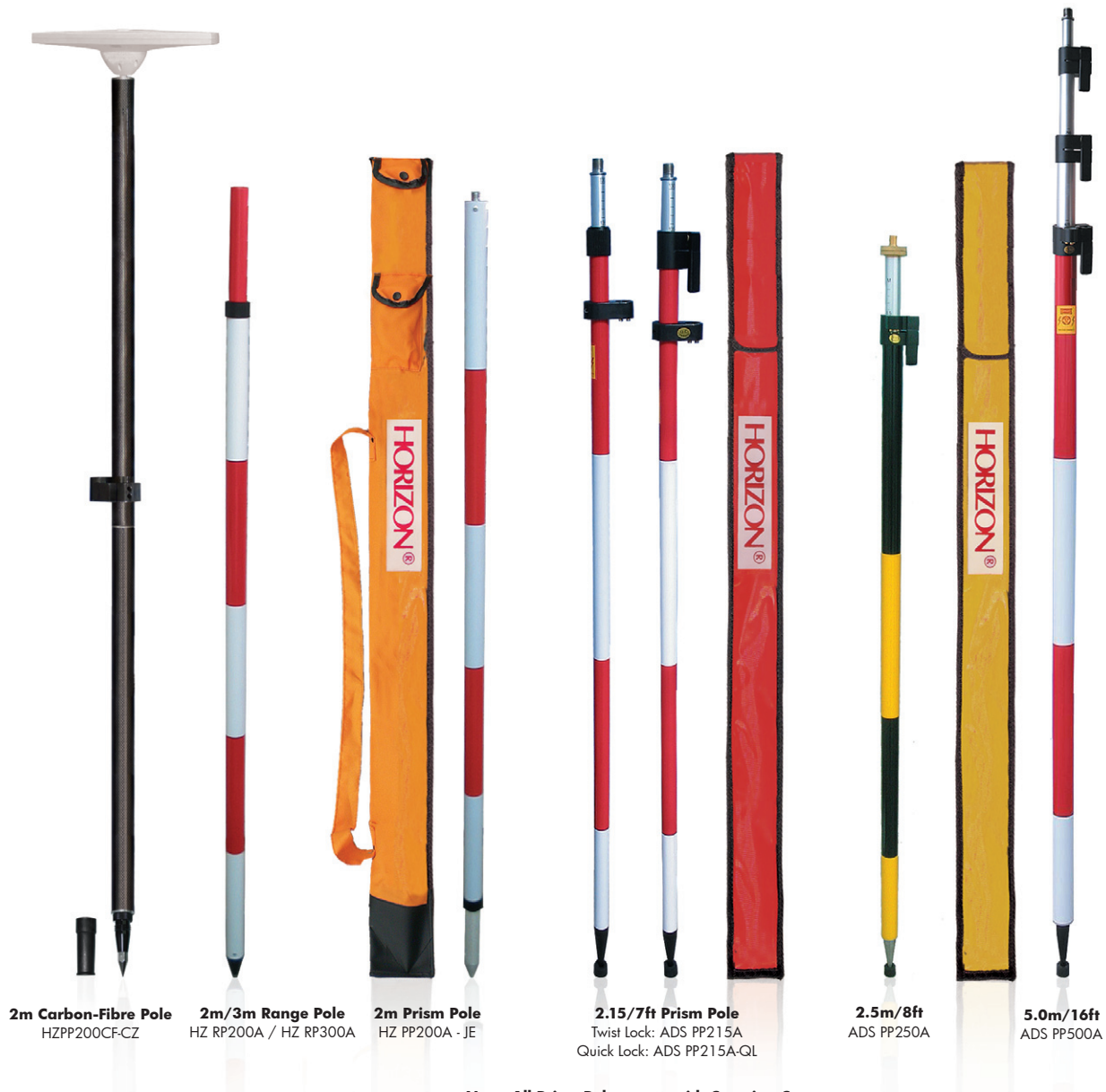
Carbon Fibre GPS Pole

Constructed with lightweight and tough carbon fibre wrapped round an alu-

minium core, HORIZON offers one of the lightest and strongest Carbon-Fibre poles in the market.

Weighing in at only 780g, and standing in at 2m, this pole is pound for pound one of the toughest in the market today.

Used mainly in GPS work, the HORIZON Carbon Fibre Pole comes in 2 piece detachable parts for easy transport, and a padded carrying bag.



2m Carbon-Fibre Pole
HZPP200CF-CZ

2m/3m Range Pole
HZ RP200A / HZ RP300A

2m Prism Pole
HZ PP200A - JE

2.15m/7ft Prism Pole
Twist Lock: ADS PP215A
Quick Lock: ADS PP215A-QL

2.5m/8ft
ADS PP250A

5.0m/16ft
ADS PP500A

Note: All Prism Poles come with Carrying Cases
All 2.15m & 2.5m Prism Pole come with Black/Yellow or Red/White Colour

STABLE & ADAPTABLE TRIPODS & BIPODS

Various types of Stands

Again with our Tripods and Bipods range, HORIZON offers a comprehensive range of stands all kinds surveying equipment in a variety of shapes, sizes and specifications.

Whether you are looking for lightweight aluminium for portability, wooden for stability or fibreglass for toughness, we understand what you need and can provide accordingly.

Similarly there is also a host of specifications you can choose from to suit your needs, from the Tripod height to Tripod head shape to even locking mechanism, you will find what you specifically want.



Horizon Tripods	QL/SL 165W	QL/SL 180W	QL/SL 165AS	QL/SL 180AS	QL/SL 165A32
Material	Wood	Wood	Aluminium	Aluminium	Aluminium
Fully Extended Length	1.65m	1.8m	1.65m	1.8m	1.65m
Retracted Length	1.05m	1.13m	0.98m	1.06m	0.97m
Tripod Head Size	14cm	14cm	14cm	14cm	11.4cm
Colours	Orange / Yellow				
Tripod Head Shape	Dome or Flat head				
Locking Device	QL (quick lock) / SL (screw lock)				



Horizon Tripods	QL/SL 160A32	QL/SL 165ARD	QL/SL 180FGB	QL/SL 170W
Material	Aluminium	Aluminium	Fibreglass	Wood
Fully Extended Length	1.60m	1.65m	1.83m	1.70m
Retracted Length	0.95m	1.02m	1.13m	1.07m
Thread	5/8" or M16cm			
Tripod Head Type	Flat Type			
Head Bore	58			
Weight	3.2kg	4.2kg	9.7kg	6.8kg
Locking Device	QL (quick lock) / SL (screw lock)			

Note: *Not inclusive of Prism Pole & Prism. Items sold separately

PRECISION COLLIMATION TECHNOLOGY

HORIZON Collimation & Alignment Systems

Besides providing quality instruments and accessories, HORIZON also offers precise collimator and alignment systems for vendors which are serious about the instruments they sell.

HORIZON offers a full range of Optical Collimators in single or multi-tube set ups, and a Laser Collimator for checking and adjustment of laser instruments.

Our complete range includes instrument stands and a Tribach adjustment devices which is available on demand.

To ensure the highest precision standards, all HORIZON's Collimation and Alignment Systems undergo strict quality control before being shipped out to our customers.



Optical Collimator Model 60
HZ WSOCM60



3 Tube Collimator Model 80
HZ WS03TC



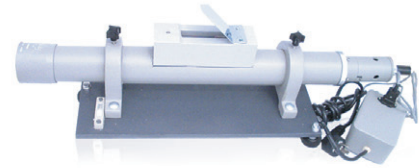
5 Tube Collimator Model 90
HZWS05TC



Dual Tube Collimator Model 70
HZ WS02TC

PRECISION COLLIMATION TECHNOLOGY

Collimator Specifications	Optical Collimator Model 60	Dual Tube Collimator Model 70	3 Tube Collimator Model 80
Focal Length	F = 550mm	F = 420mm	F = 420mm
Relative Aperture of Objective	D/f = 1/10		
Reticule for Checking Shortest Focusing Distance for Horizontal Tube	2m		
Angle between two Collimators	30° ± 15'		
Reticule Graduation	30" / Graduation	20" / Graduation	20" / Graduation
Reticule Graduation Range			
Horizontal	± 30'	± 20'	± 20'
Vertical	± 30'	± 20'	± 20'
Size of Centering Screw for securing of instruments into test position	5/8"		
Sensitivity of Levelling Bubble	20"	10"	10"
Step Down Transformer	220V to 6V		
Voltage of light bulb for Reticule Illumination	6V	5V	5V
Current of light bulb	0.3A		
Physical Dimension (L x W x H) cm	94 x 30.4 x 58.5	75 x 40 x 70	75 x 40 x 85
Weight	85kg	90kg	110kg



Collimator for adjustments & calibration of Laser instruments
HZ WSLC01



Collimator 550
HZ WSCM550



Tribrach Optical Plummet Alignment Tool
HZ WSTB01

Laser Collimators

This device is used for the Collimation and Adjustment of Laser Instruments like Multi-line Lasers, Rotating Lasers plus others.

Collimator Specifications	Laser Collimator	Collimator 550
Focal Length	F = 550mm	
Relative Aperture of Objective	D/f = 1/10	
Reticule for Checking Shortest Focusing Distance for Horizontal Tube	∞	-
Reticule Graduation	-	20" / Graduation
Sensitivity of Levelling Bubble	8"	-
Step Down Transformer	220V to 6V	220V to 6V
Voltage of light bulb for Reticule Illumination	6V	
Current of Light Bulb	0.3A	
Physical Dimension (L x W x H) cm	68 x 20 x 24	70 x 17 x 12
Weight	14kg	7.5kg

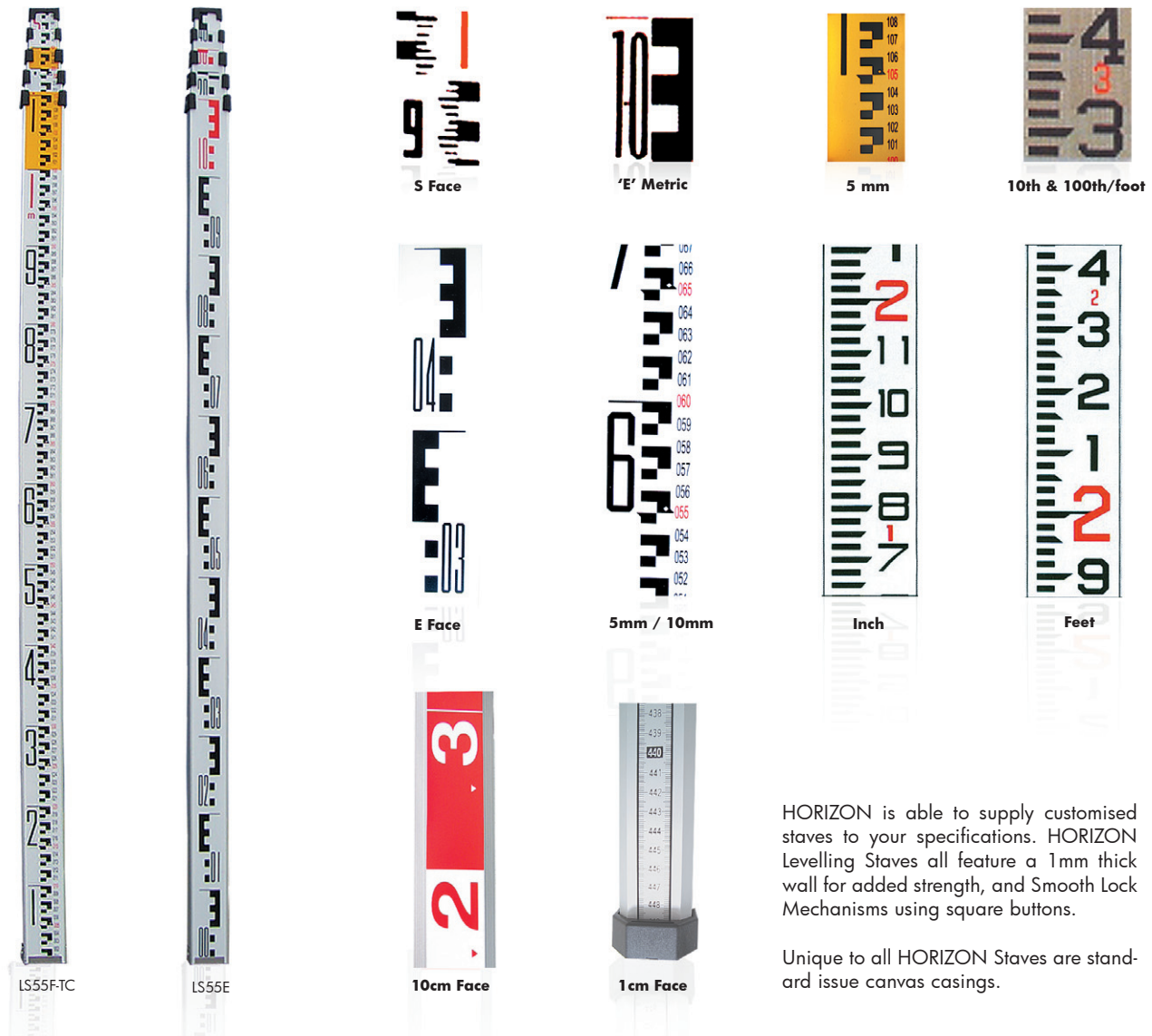
Features of Instrument Stand

- Weight : >100kg
- Adjustable height
- Screw type base mounting
- Standard 5/8" thread connection to instrument
- Illuminated Crosshairs



Instrument Stand with adjustable height and illuminated Crosshair
HZ WSBW1

MEASURING UP - IN ANY UNIT OR LENGTH



HORIZON is able to supply customised staves to your specifications. HORIZON Levelling Staves all feature a 1mm thick wall for added strength, and Smooth Lock Mechanisms using square buttons.

Unique to all HORIZON Staves are standard issue canvas casings.

Staff Model Number	LS 33E	LS 335	LS 33EF	LS 33F-TC	LS 44E	LS 445	LS 44EF	LS 44F-TC
Order No.	HZ LS33E	HZ LS335	HZ LS33E F	HZ LS33F TC	HZ LS44 E	HZ LS44 5	HZ LS44E F	HZ LS44F-TC
Section	3	3	3	3	4	4	4	4
Graduation Front	E	5mm	E	5mm	E	5mm	E	5mm
Graduation Back	-	1cm	10th & 100th / Foot	10cm	-	1cm	10th & 100th / Foot	10cm
Weight	1.0kg	1.0kg	1.0kg	1.0kg	1.5kg	1.5kg	1.5kg	1.5kg

Staff Model Number	LS 55E	LS 555	LS 55EF	LS 55F-TC
Order No.	HZ LS55 E	HZ LS55 5	HZ LS55E F	HZ LS55F-TC
Section	5	5	5	5
Graduation Front	E	5mm	E	5mm
Graduation Back	-	1cm	10th & 100th / Foot	10cm
Weight	1.7kg	1.7kg	1.7kg	1.7kg

CIRCULAR & PLATE LEVEL CUSTOMISATION



HZ 2000 Series
SP OLT2000CL



HZ 4024
SP HZOLS024CL



HZ 4032
SP HZOLS032CL



NA700
LC SPOL641990



NA800
LC SP434239



AJ10/AJ13
SP ADSTBAJCL



AL 10 Tribach Adapter
SP ADSTAALPL



HTS 300 / ET 1000 Series
SP ETHTSPL01

Various types of Replacement Bubbles

To expand our product range to suit all users, Horizon offers a wide range of replacement Bubbles to customise your surveying equipment.

	Model	Order Number	Sensitivity of Bubble
Circular Level	HZ 2000 Series	SP OLT2000CL	8'/2mm
	HZ 4024	SP HZOLS024CL	8'/2mm
	HZ 4032	SP HZOLS032CL	8'/2mm
	AJ10 / AJ13	SP ADSTBAJCL	8'/2mm
	NA 700 Series	LC SPOL641990	10'/2mm
	NA 800 Series	LC SP434239	10'/2mm
Plate Level	AL 10 Tribach Adapter	SP ADSTAALPL	30'/2mm
	HTS 300 / ET 1000 Series	SP ETHTSPL01	30'/2mm

HIGH QUALITY & WIDE RANGE OF COMPASSES

With a wide range of quality Compasses, Horizon has something to offer to every industry that needs one. From a simple Pocket Compass to Optical Compasses to even those for Forestry Survey.

Our range of Compasses will serve a wide range of applications.



DC45-3 Compass
HZ MCDC45-3



DQY-M Mecca Seeking Pocket Compass
HZ PCIQYM



DQL-3 Pocket Compass
HZ PCHQL3



DQL-2A Pocket Compass
HZ PCHQL2A



DQL-1 Forestry Compass
HZ OCHDQL1



DQY1 Pocket Compass
HZ PCHDQY1



DQL-8 Pocket Compass
HZ PCHQL8



DC45-1 Compass
HZ MCDC45-1



DC45-2 Compass
HZ MCDC45-2



DSL-1 Forestry Compass
HZ ODLHDSL1



DQL-6 Optical Compass
HZ OCHQL6

MEASURING WHEELS

Classique Professional

- Measures up to 10km by 10cm units
- Metric or Imperial
- Pistol Grip Zero Reset
- Trigger Brake
- Kick Down Side Stand
- Sealed Roller Bearings
- Wrist Strap
- In Line Weight Distribution for Balance
- Folds in Half
- Optional Carry Case
- Full One Year Guarantee

Measuring wheel 500 deluxe

500mm Circumference wheel for accuracy as well as for convenience and compact storage. Folds easily to one third of it's length and snaps back to full length.

- Wheel Circumference :500mm
- Wheel Diameter : 160mm
- Maximum Distance :999.9m
- Reading : Meters, Decimeters
- Weight 1.1kg

MW 500 Bantam

- Net Weight : 0.77 kg

Other specifications same as MW Mini 500



Measuring wheel 500 deluxe
HZ MWRS02

Measuring wheel Bantam
HZ MWRS03

Classique Professional
HZ MWRS01

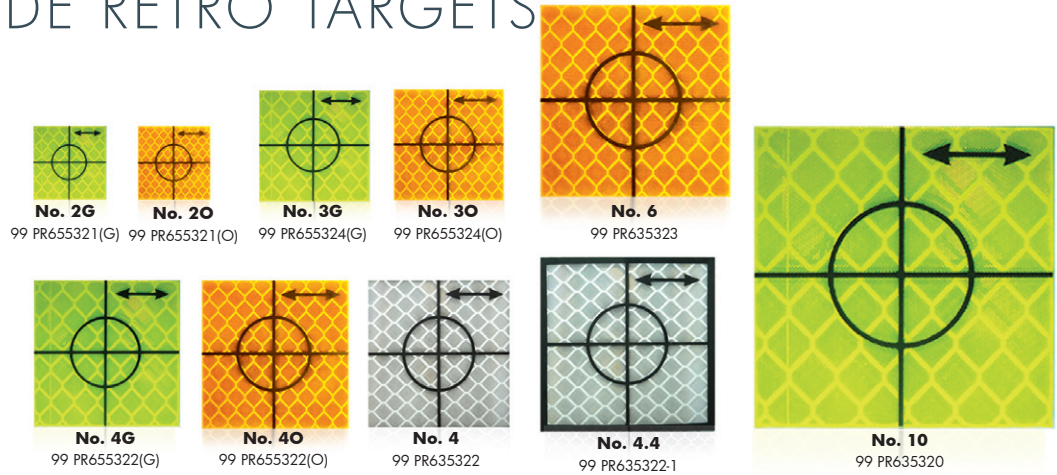
SWISS MADE RETRO TARGETS

HORIZON

Retro-Targets

These are premium quality Reflective Targets made in Switzerland. A very convenient and handy type of Prisms, our Retro-Targets work with all major brand instruments well.

HORIZON Retro-Targets are available in a variety of sizes and colours.



Retro Target Specifications	No. 2G/No. 2O	No. 3G/No. 3O	No. 4/No. 4G/No. 4O	No.4.4	No. 6	No.10
Size	20 x 20 mm	30 x 30 mm	40 x 40mm	44 x 44mm	60 x 60mm	100 x 100mm
Measuring Range	80m	100m	150m	155m	200m	300m

CARRYING CASES & BAGS

HORIZON Bags and Carrying Cases are made of High Fibre Count Nylon and durable Hard Plastics to safe keep the instruments and equipment inside.

These are readily available to ensure that HORIZON equipment continually receives the best protection.

However given the long lasting nature of HORIZON products and the rugged environment these carrying cases are subjected to, wear and tear or accidents may occur to warrant replacements.

HORIZON Bags and Carrying Cases are usually in bright colours to ensure that the equipment can be easily located should it be misplaced.

No.	Suitable Model	Order Number
1	Prism Pole 2.5m	ADS PP250A-CC
	Prism Pole 5m	ADS PP500A-CC
2	Prism Pole 2.15m	ADS PP215A-CC
3	Prism Pole 2m	ADS PP200A-CC
4	Levelling Staff	HZ LSCC
5	ADS 360° Prism	ADS SP360PR
6	ADS Prism Set	ADS SPAB01
7	AKXXT Prism System*	ADS SPA B05
8	ADS Prism Set*	ADS AX02
9	ADS 102 Mini Prism	ADS SP102PR
	ADS 103 Mini Prism	ADS SP103PR
	ADS 104 Mini Prism	ADS SP104PR
	ADS 105 Mini Prism	ADS SP105PR
	ADS 112 Mini Prism	ADS SP112PR
10	Mini Pole for ADS 103 (3 x 60cm)	ADS SP103PP
	Mini Pole for ADS 105 (3 x 60cm)	ADS SP105PP
	Mini Pole for ADS 103 (4 x 25cm)	ADS SP103PP-SKK
	Mini Pole for ADS 105 (4 x 25cm)	ADS SP105PP-SKK
	Mini Pole for ADS 112	ADS SP112PP



MORE ACCESSORIES TO CHOOSE FROM

Other Accessories

HORIZON offers a wide selection of small survey accessories, like a complete Rod Level selection, Crack Monitors, Optical Squares and several other products which are not listed.

HORIZON has a constantly expanding product range so if you are looking for something related to Surveying that is not mentioned in this catalogue, chances are that we do offer it too.

All your surveying answers, are just a simple phone call or email away!



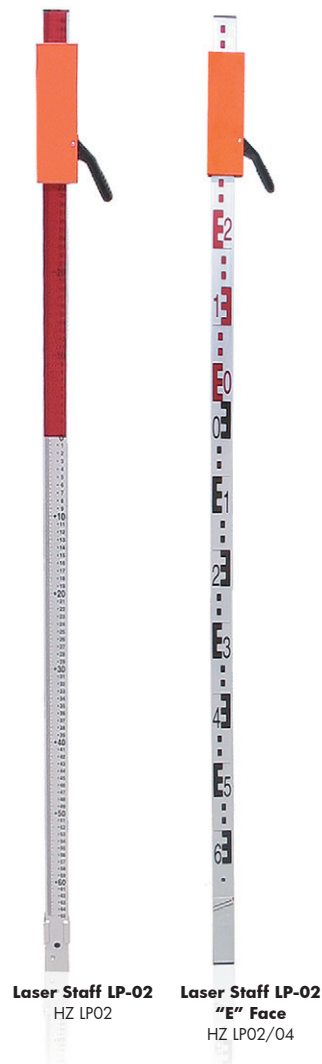
Laser Accessories

HORIZON carries a wide range of Laser accessories to complement our laser emitting products.

The Universal Telescopic 2 section 2m Laser Staff with a Sliding Bracket conveniently holds most types of Laser Detectors This system provides fast,

easy and accurate determination of height differences.

The etched-in markings and surface protection coating ensures the clear and long lasting Graduation. All laser staff are supplied with quick lock sliding bracket and a nylon case

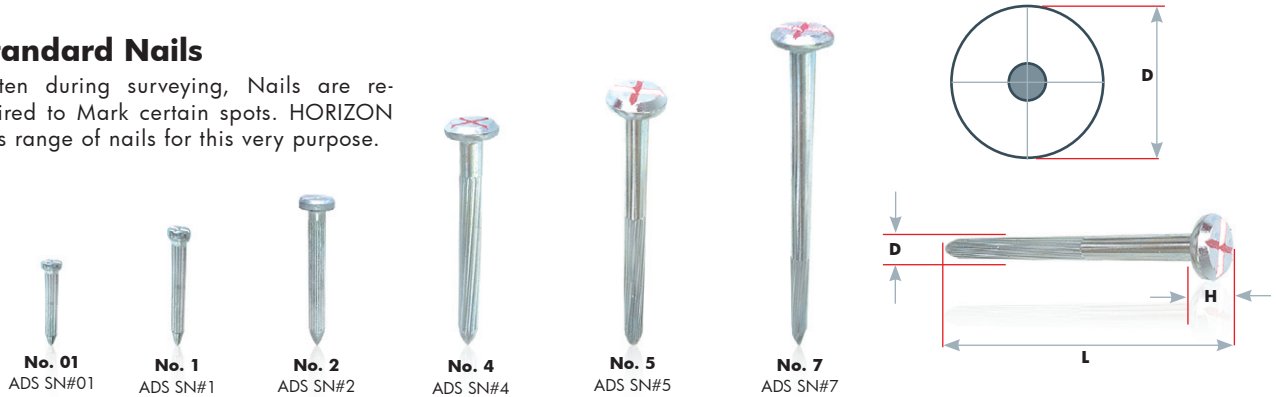


Laser Sensor HLD10 Specifications	
Detective Range	50mm (2.01in)
Detective Precision	High Precision: $\pm 1\text{mm}$ ($\pm 0.04\text{in}$) Normal Precision: $\pm 2\text{mm}$ ($\pm 0.08\text{in}$)
Detective Beam Indication	Two LCDs (Front & Rear), Buzzer
Power Source	DC9V Alkaline Battery
Time for Power Auto Cut Off	20min Approx.
Operations Temperature Range	$-20^{\circ} \sim +50^{\circ}\text{C}$ ($-4^{\circ}\text{F} \sim 122^{\circ}\text{F}$)
Dimensions	150(L) x 97(W) x 24(H) mm
Weight	0.2kg (0.44 lbs) - including battery

HITTING THE NAIL ON THE MARK

Standard Nails

Often during surveying, Nails are required to Mark certain spots. HORIZON has range of nails for this very purpose.



Survey Nails Specification	No. 01	No. 1	No. 2	No. 4	No. 5	No. 7
Size D x H x L (mm)	6 x 3.7 x 29	9.2 x 4.5 x 44	15 x 7.3 x 50.7	20.2 x 6.5 x 104.7	20.4 x 7x129.9	20.5 x 7.1 x 202.3



Premium Nails

HORIZON now offers a choice of Premium Nails made in Japan. This range of nails are made for more strenuous use such as Markings in concrete and other hard surfaces.

HORIZONs' new Carburized nails are verified in laboratory statistics.

In various tensile, bend and strength test, these nails have been proven to

perform up to 24%-31% better than other nails, in an mean average taken over a few test.

Call us to enquire on the sizes available.

Carburizing Nail Comparison (Average taken over a sample of 3 nails.)	Normal Nail	Carburizing Nail	Percentage Improvement
Tensile Strength	65kgf/mm ²	65kgf/mm ²	24%
Bend Test (bend with 40mm Nail to be cracked)	537kgf	705kgf	31%
Strength Test	2969kgf	3857kgf	30%

SURVEY MARKERS

Survey Marker Specification	No. 2	No. 3	No. 4
Size D x d	Ø 26.5 x 5.1 mm	Ø 46 x 9.4 mm	Ø 53.8 x 8.7 mm

Note: * Available in red, yellow & blue colour

